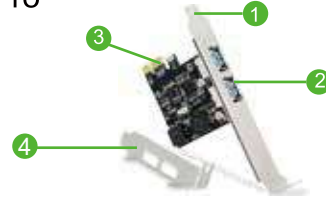


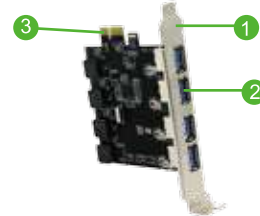
## PCI Express USB 3.0 Expansion Card

Model : •FS-U2-Pro •FS-U4-Pro •FS-U4

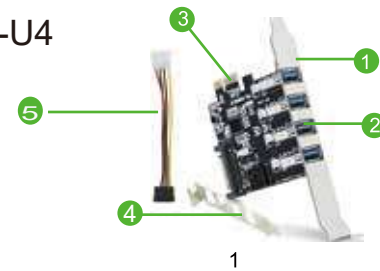
### FS-U2-Pro



### FS-U4-Pro



### FS-U4



- 1 Standard profile bracket
- 2 USB 3.0 Interface
- 3 PCI express interface
- 4 Low profile bracket
- 5 SATA Power cable

#### Product Description :

**Feb Smart FS-U2-Pro** allows you add two USB 3.0 super fast 5Gbps ports on your desktop computer for video, audio, photos or files transfer. Build in Self-powered Technology for high power-consuming data devices such as hard disk.

**Feb Smart FS-U4-Pro** allows you add four USB 3.0 super fast 5Gbps ports on your desktop computer for video , audio ,photos or files transfer. Build in Self-powered Technology for high power-consuming data devices such as hard disk.

**Feb Smart FS-U4** allows you add four USB 3.0 super speed 5Gbps ports on desk top computer for video, audio,photos or files transfer. Packed power cable will let you connect the USB card to computer power control center to get enough power for USB device.

#### What is Feb Smart Self-powered technology?

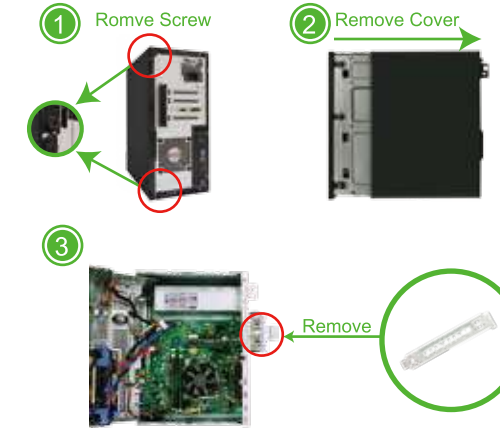
Self-powered Technology is a solution to add more power supply for USB expansion card. The old version PCI Express USB card you see on the market need to plug a power cable from the desktop computer power control center. Even you add additional power on it sometime it lack of power when you running few high power-consuming devices simultaneously like hard disk. PCI Express Slot can provide 75W max almost 12V/6.25A. We add a voltage transformer on the USB card get 5V/15A max power. Then we add a power module on each USB ports distribute current for each port 5V/2A. Most of the high power-consuming devices need 4~8W which means our USB expansion card can be running few the high power-consuming device simultaneously in high speed. To protect data device we add on a safety electric circuit protector for each ports. Do not worry data loss or burning the data device now. Choose fast and safe data connection with Feb Smart.

#### System & Hardware Requirements :

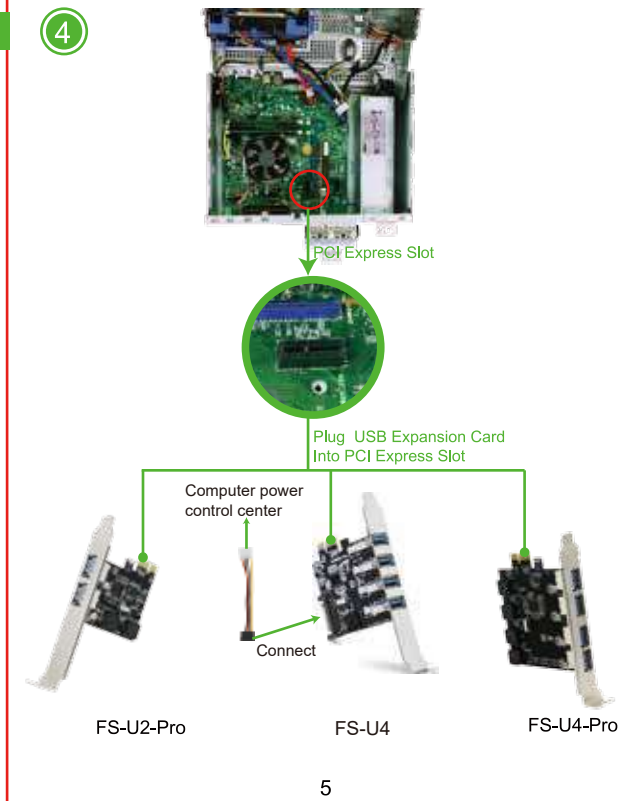
No need driver on Windows 8,8.1,10(32/64bit)  
Need to install driver on Windows XP,7,Vista(32/64bit)

#### Assemble the USB Expansion Card to Desktop Computer :

**Step1.** Switch OFF, unplug your computer from the main socket, unplug the power cord and other connected peripheral devices. Remove the cover from your computer case.



**Step2.** Find the correct PCI Express Slot ,Insert the USB expansion card into an empty PCI-E slot of the motherboard.



**Step3.** Reattach the cover of computer case, turn on computer.

2. Find the USB Card on computers, check if the USB Card assembled properly:

### FS-U2-Pro



USB 3.0 Interface

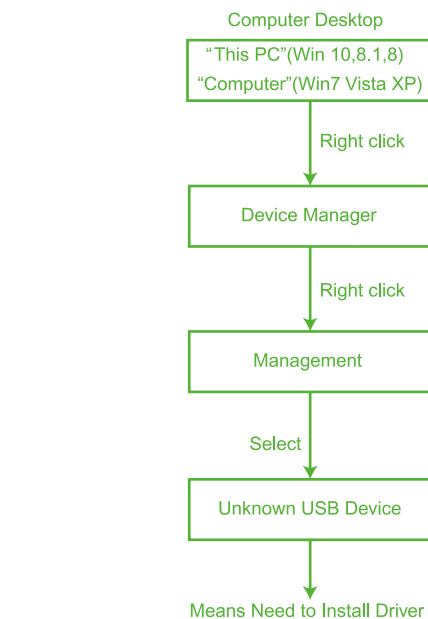
### FS-U4-Pro&FS-U4



USB 3.0 Interface

#### Find USB Card on Computers:

1. Users can plug USB device such as USB keyboard, mouse or hard drive etc on the USB ports check if computer can find the device, can use it as they wish.



3. System can't read the USB device and Can't find "Unknown USB Device " Means you have to re-plug it to PCI Express slot or plug it to other PCI Express slot. And check again.

#### Driver Installation :

##### Note :

1. FS-U2-Pro, FS-U4-Pro and FS-U4 are share same driver for all kind of Windows system such as Windows 10,8.1,8,7,Vista,XP(32/64bit).

2. Most of Windows 10,8.1,8 (32/64bit) do not need to install drivers if the system is Windows original system. If computer can't recognize the device ,do not worry install the driver and get it work.

3. Windows7,XP,Vista(32/64bit) need to install the driver as below. Refer steps as below complete the driver installation steps.

**Step1.** Find drivers from the mini CD or download from [www.febsmart.com](http://www.febsmart.com)

PCI Express Serial → Renesas → USB Card

**Step2.** Running the driver.

1. Double right-click



USB Card

2. Waiting the files ready to install.



3. Click "Next"



4. Accept the license, Click "Next"



5. Click "Install"



6. Waiting for the driver installation.



7. Click "Finish", and start using the new USB ports



#### Trouble Shooting Analyze :

1. How many USB device can running simultaneously?

Actually with Feb Smart Self-Powered technology you can running all the USB ports with high power consumption device no issue.

2. Why my USB hard driver or Hard disk transfer data slow than official data speed ?

1. USB Hard drive USB ports maybe USB 2.0 , so it will running USB 2.0 Speed.

2. USB Hard driver are in different speed if it is SSD or HDD. SSD transfer data faster than HDD.

3. Is the USB ports can be connected external USB HUB or other device ?

Yes, it can be connected on any USB device Windows supported.